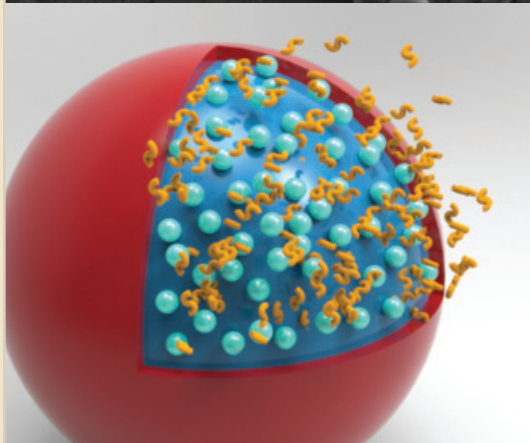
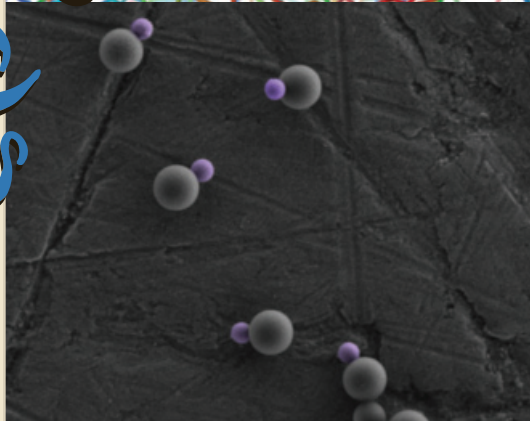
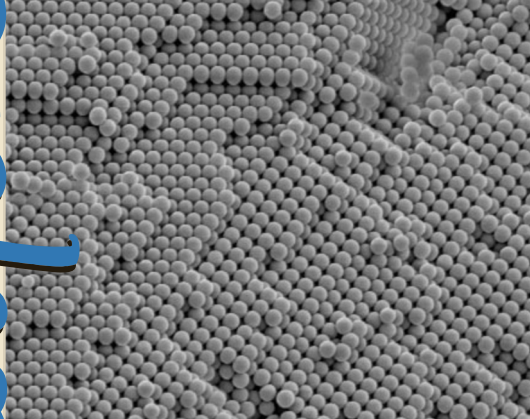
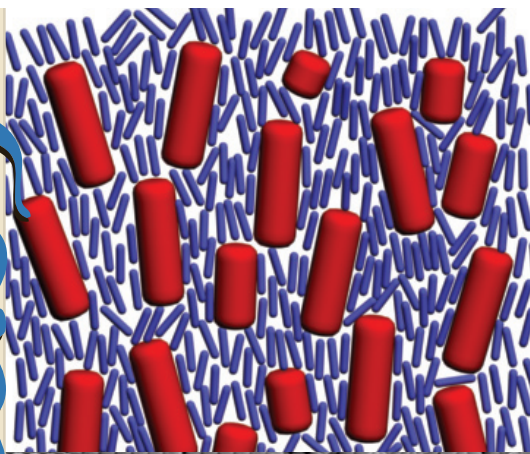


Complex Fluids



62nd New England Complex Fluids Workshop

Friday, March 20, 2015

**Luce Hall
Yale University
New Haven, Connecticut
8:45 am – 5 pm**

Invited speakers

Emanuela Del Gado (Georgetown)
Nikta Fakhri (MIT)
Stefano Sacanna (NYU)
Jim Swan (MIT)
Hyeran Kang (Yale)

Topics of invited talks

Cooperative processes and yielding of colloidal gels
Physics in crowded environments
Anisotropic colloids and their assembly
Non-linear and time-dependent suspension rheology
Dynamics of biological filaments

Objectives

These workshops are held to encourage collaboration and discussion among soft condensed matter researchers in the New England region and to facilitate career development for students and postdocs.

Sound bites

We welcome abstract submissions for the sound-bite sessions, which feature short talks (~4 min) highlighting current research.

Organizing committee

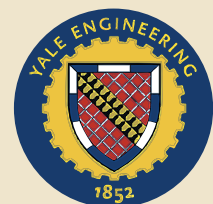
Prof. Eric Dufresne	eric.dufresne@yale.edu
Prof. Corey O'Hern	corey.ohern@yale.edu
Prof. Chinedum Osuji	chinedum.osuji@yale.edu

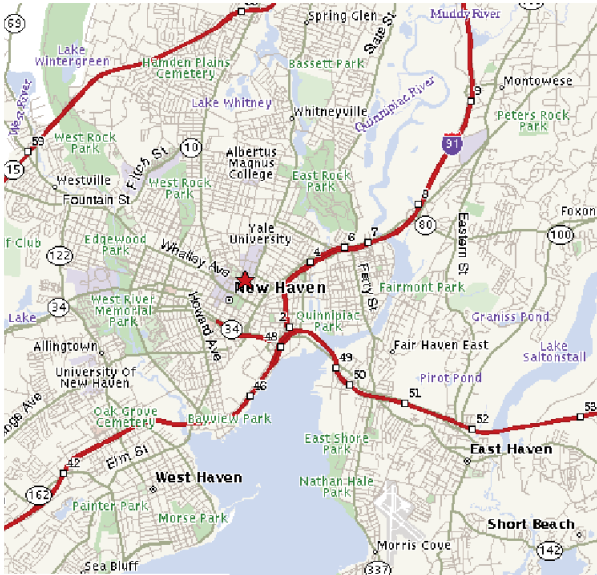
Website www.complexfluids.org

Registration deadline **March 18, 2015**

Sponsors

Center for Research on Interface Structures
and Phenomena
Department of Chemical and
Environmental Engineering
Department of Mechanical Engineering
& Materials Science
School of Engineering & Applied Science





62nd New England Complex Fluids Workshop

March 20, 2015 • Yale University

Parking

Parking is provided free of charge to all participants at Science Hill parking garage, 200 Prospect Street (behind Ingalls Rink).

Guests must use PIN pad number **663#** (including the pound sign) to enter and exit the parking lot. Only limited street parking is available and is not recommended.

Directions to Yale Campus and Science Hill Parking Garage

From I-95:

- Take exit to **I-91** and follow directions below.

From I-91:

- Use **Exit #3** from I-91 and follow exit ramp.
- Proceed through traffic light at end of exit ramp onto **Trumbull Street.**
- At next traffic light, turn right onto **Whitney Avenue.**
- Travel north on Whitney Ave. to the **first** traffic light.
- Turn left onto Sachem Street.
- Turn right onto Prospect Street. Travel past Ingalls Rink on your left.
- The entrance to the **Science Hill parking garage** will be on your left.

Directions to Luce Hall auditorium

The workshop will be held in **Luce Hall auditorium** (Room 101) at 34 Hillhouse Avenue. It will take 5 minutes to walk from the parking garage.

- Walk south on Prospect Street. Turn left onto Sachem Street.
- Turn right onto Hillhouse Ave.
- Luce Center will be on your right and recessed from Hillhouse Ave.

